



2



FAC FAN

I THANK GOD

"But someone will say, 'You have faith; I have deeds.' Show me your faith without deeds, and I will show you my faith by what I do."

James 2:18 NIV

A LETTER FROM THE LEAD PASTOR...

We find ourselves at an incredibly important crossroad, as we've been growing rapidly for years now. We had 14 services between Imlay City and Sterling Heights this past Easter to accommodate all of our guests. We even had to add a 4th service on Sunday mornings at our Sterling Heights campus due to capacity in our building! In 2022, we were ranked the 23rd fastest growing church in America... all because of what God is doing in and through this community! We know that it is time for us to expand our footprint to a third in-person location in order to reach more people for Jesus. As we began to do our research, we noticed that we have a large group of families who are driving from what we call the "Stony Creek area" (Washington, Shelby, Romeo, & Rochester) and coming to our Sterling Heights campus.

To the families who live in this area: You are incredible! You serve, lead, give, and partner with us in this mission! And as much as we love you driving to our Sterling Heights or Imlay City campus, we started dreaming about what it would look like if we took the same experience to your neighborhood! Imagine, right in your backyard is a place not too far to drive and invite your family, friends, neighbors, and co-workers to the same high-quality, powerful service we experience now! All to see those far from God experience the life-changing power found in Jesus Christ! This brand-new adventure will launch in the Fall of 2024, and we are prayerfully hoping you will join us on this exciting ride!

We are asking our entire Heritage family to come together and make this happen, even if most of you never attend the new campus in-person! Just as we have benefited from the sacrifice of others we have never met, who launched Heritage so many years ago, it's our turn now to do the same for the thousands of great people in this area! We have to raise 1.5 million dollars to achieve these goals. I know it sounds like a lot of money, and it is, but with the families we have who are bought into the mission at Heritage, this is very achievable if we all do our part together!

Would you please join us in being a part of something much bigger than us? Will you consider praying a courageous prayer? "Lord, what should my part be in this new adventure you have called us to as a church?" My hope and prayer is that you will courageously say "YES" to how the Lord leads you, and jump on board with us! After all, life is always better together!

I LOVE THIS CHURCH!

- Jeff Forester





It was from the very beginning when I was contacted to help find a property for Heritage Church's new campus in Imlay City that my family and I knew this was the answer to what we had all been praying for and hoping would take place in our hometown. It has been amazing to watch it grow to what it is today: a fun and loving church that serves the community with the focus of giving the good news of Jesus Christ. This growth would have never happened without the vision of our leaders and the loving sacrifice of our amazing Heritage Family. It's now that we all can have a part in paying it forward with our commitment and sacrifice to launch yet another new campus in the Stony Creek area. My family and I look forward to partnering with you to not only see what God is going to do again but actually experience it personally with each and every one of you along the way.

- Tom Blount

From the minute I started working at Heritage, I knew my family and I had found a home! I love the mission of Heritage, the people in this community, and all the FUN we have together! My family and I couldn't be more honored to take point in leading this new adventure out in the Stony area. In fact, they have been the biggest cheerleaders over the years in any new endeavor, because they've seen God move us, challenge us, and grow us in every season and through every hill and every valley. Because of that, I cannot wait to begin this journey with hundreds of more people who want to go on an adventure and see what God can do through us, reaching this community with the hope that can only be found in Jesus!



- Kyle Daubenmeyer

FAITH IN ACTION FAITH IN ACTION FAITH IN ACTION CAMPAIGN

The FAITH IN ACTION Campaign...

- ...is a 12-month journey for everyone who believes in the mission and vision of Heritage Church! It's for those who have a passion together to "do what it takes" to reach those who are far from God!
- ...is both a "give now" and "pledge to give as we go" campaign!
- ...will culminate in one year with the launch of a brand-new Heritage Campus in the "Stony Creek" area, as well as fulfilling a long-time dream of a brand-new Pantry Center to feed thousands of under-resourced families a year!

James 2:18 NIV

*"But someone will say, 'You have faith; I have deeds.'
Show me your faith without deeds, and I will show
you my faith by what I do."*

James reminds us that true faith is not about knowledge, but about action. We earnestly feel the Lord is calling us as a church to launch this brand-new campus, and we are praying that EVERYONE will come together and be a part of it! Most of you who will give financially to this campaign may never even attend this new campus. But at Heritage, we always say, "It's not about us!". It's always been about reaching those who are far from God. We may not know the individual names of the thousands of lives that will be changed for all eternity through this new church location, but I believe God knows every name, even now. And He loves every single one dearly - and fiercely.

Aren't you glad someone sacrificed at one time in the past for your benefit and the benefit of your family? I believe this is the right time. It's time for us to put our "faith in action", as the book of James tells us. It's time to pay the blessing forward. Not to just get excited about the prospect of reaching people for Jesus Christ, but actually "making it happen". If everyone will do their part to "feel the sacrifice", we can see God do great things beyond anything we could ever imagine or even hope for. Will you join us in having "skin in the game"? I pray you will! "Thank you" in advance for jumping in! We can do this thing TOGETHER!

I LOVE YOU ALL!

- Chris Zarbaugh



TIMELINE OF HERITAGE CHURCH



CHURCH GREW AND MOVES INTO THE LUTHERAN HIGH NORTH'S AUDITORIUM



MOVES TO HALL ROAD AND SCHOENHERR

20
00

HERITAGE CHURCH LAUNCHES AT LUTHERAN HIGHSCHOOL'S NORTH LIBRARY



20
03

20
06

PASTOR JEFF BECOMES LEAD PASTOR



20
10

DISCOVER CHURCH MERGES WITH HERITAGE CHURCH



20
11



IMLAY CITY LAUNCHES



ONLINE CAMPUS LAUNCHES

20
13

20
14

20
20

20
24

HOPE CHURCH LAUNCHES



FUTURE CAMPUS LAUNCH!



"Not to us, O LORD, not to us, but to Your name goes all the glory for Your unfailing love and faithfulness."
Psalms 115:1 NLT

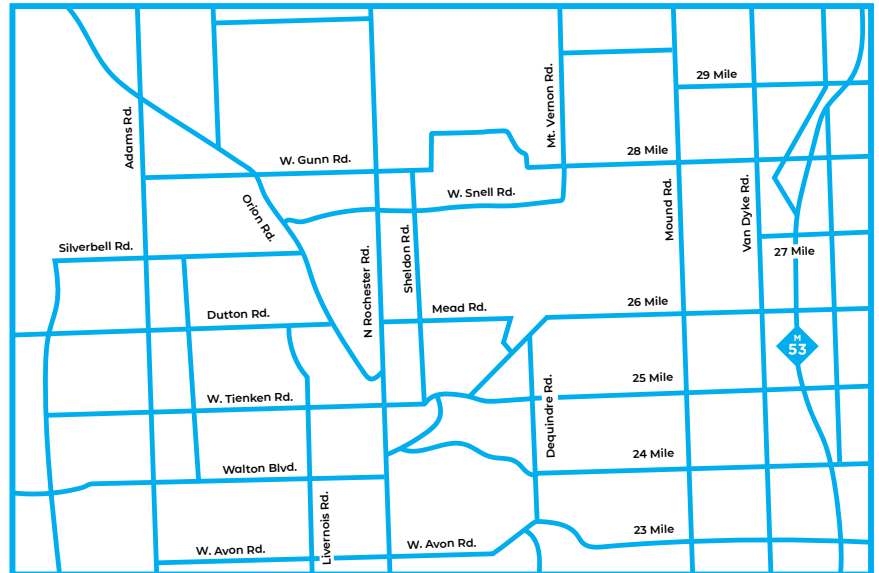


GENERAL MAP: WHERE ARE WE TARGETING?

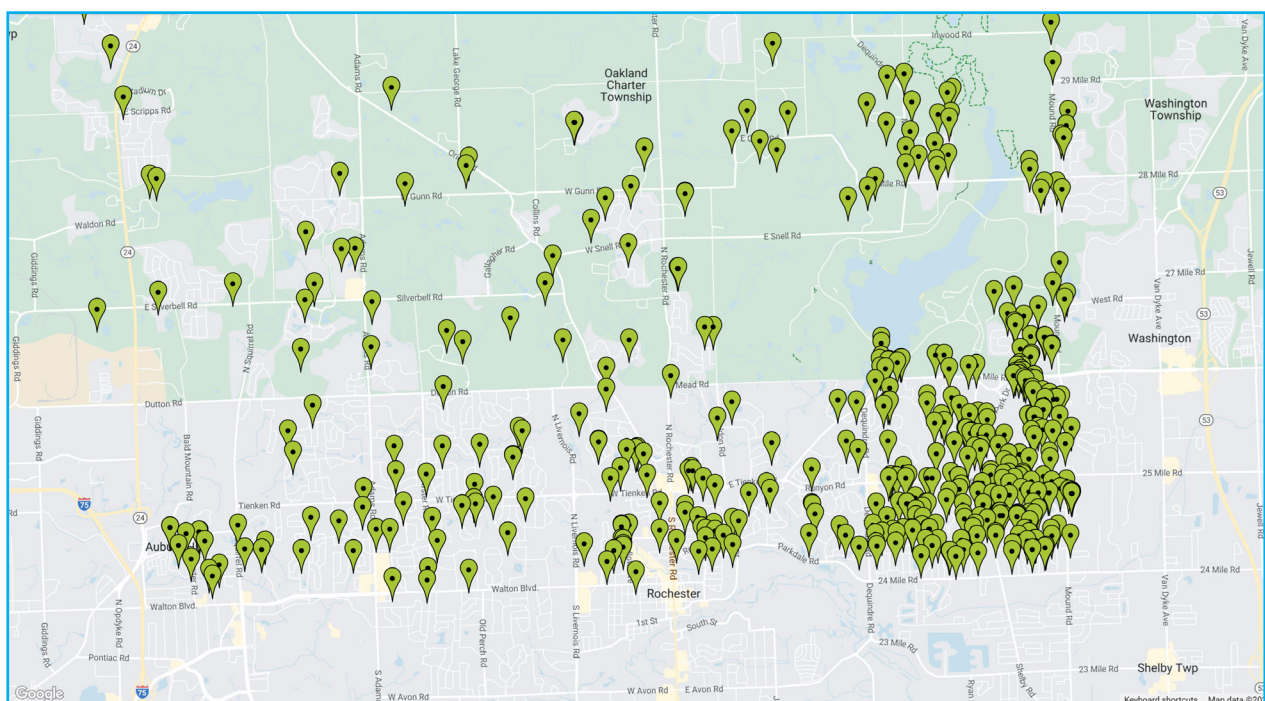
THIS IS WHERE WE ARE DREAMING

This is a general map of the location we are targeting. We are looking at the Northern Rochester, Northern Macomb, Shelby, Washington, Romeo, Oakland Twp., and Stony Creek area.

Our stats show on the other maps how many people drive from this area to attend a Heritage Campus.



The map below includes all of the individuals and families that have attended Heritage at least once in the past few years from the targeted area.



FUTURE CAMPUS: WHAT CAN WE EXPECT?

This new Campus will be a place to invite your friends, family, neighbors, and co-workers to experience the same high-quality, powerful service we all enjoy at our other two locations!

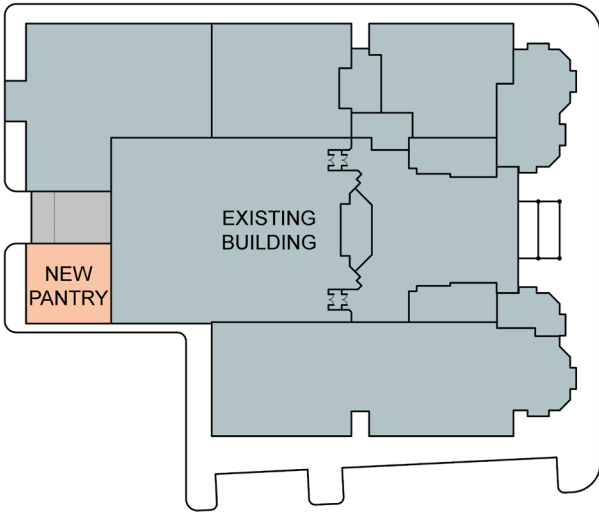


Family Ministries have always been at the top of our priority list. This new Campus will have the same great, family-oriented focus as our other two locations.



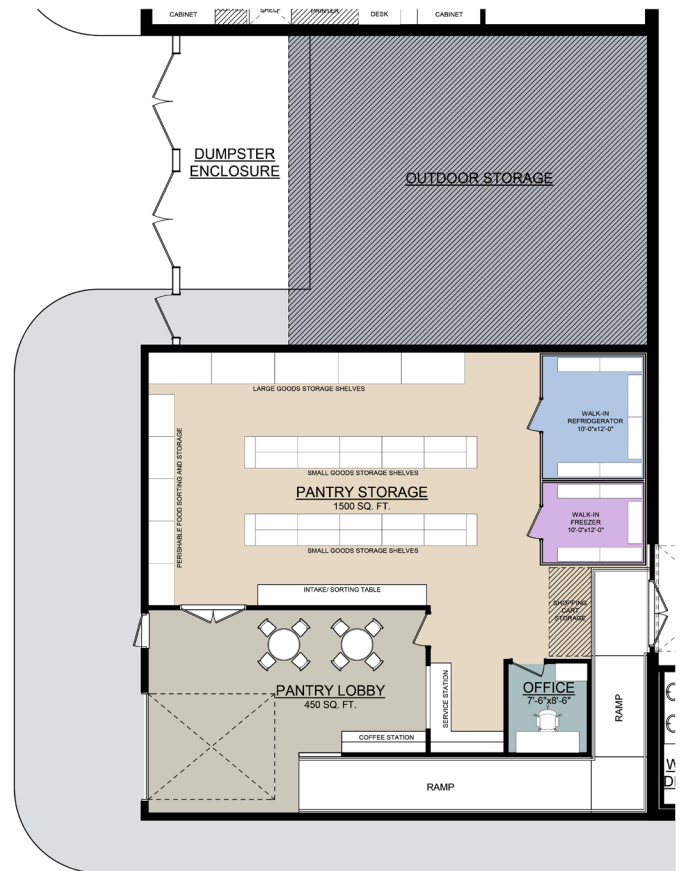
THE PANTRY CENTER & THE REFUGE: UPDATES AND EXPANSION

This is the new **Pantry Center**! We will be adding 2000 square feet to the Sterling Heights campus, and with this new addition we will be able to serve thousands more people in our community! Below are diagrams and floor plans of the new Pantry Center update.



This is a diagram of the Sterling Heights campus with the new Pantry Center addition.

This is a diagram of the Floor Plan for the new Pantry Center with a lot more space to serve thousands more people.



Through this campaign we will also provide support for **The Refuge** in Imlay City to help the people in the Imlay City community.

DISCERNING GOD'S WILL FOR YOUR FAITH IN ACTION COMMITMENT

The most important decision you or your family will make during our FAITH IN ACTION Campaign will be your own giving commitment. How do you know what God wants you to give over the next 12 months? Here are some suggested steps that may help you in your decision.

- **DON'T RUSH YOUR DECISION**

Give yourself time to hear from God. The more time you give to consider your commitment, the more God will build your faith, and the more likely you will position yourself to see God work in a mighty way through this decision!

- **PRAY THIS EVERY DAY**

"Lord, show me how to give in a way that stretches and builds my faith more than ever. I want to trust you for a miracle." God is more interested in you trusting Him than in the amount you commit to give. The more you sincerely pray this prayer, the more God will show you how you could stretch your faith and even your sacrificial gift. If you're married, pray together with your spouse.

- **REMEMBER OUR THEME IS "EQUAL SACRIFICE, NOT EQUAL GIFTS"**

Obviously, not everyone can give the same amount. God doesn't expect that. But God does want all of us to make a genuine sacrifice for Him, which will be different for each of us. If my gift is not a sacrifice, then it doesn't require any faith. David said, "I will not sacrifice to the Lord an offering that cost me nothing" (2 Samuel 24:24).



● **DECIDE WHETHER YOU WILL GIVE BY YOUR OWN REASONING OR BY GOD'S REVELATION**

When I give based on my own reasoning, I simply look at how much I have, figure out a "reasonable" amount to give, and then I commit to give it. This is the most common way people give to charities. It's an act of unselfishness, but it requires no faith or sacrifice. Reason simply asks, "What can I afford to give?" But there is a better way to give.

When I give based on God's revelation, I pray, "Lord, what do you want to give through me?" This kind of giving requires faith. Did you know, there are more verses in the Bible about money and generosity than about any other topic? It's because God knew it would be the number one chief competitor for our affection. Did you know, that if you have one working car and make more than \$40k, that you are in the top 1% of the richest people on the planet? I know we all don't feel rich, but we are. 1 Timothy 6:17 says, "Command those who are rich (that's us) in this present world not to be arrogant nor to put their hope in wealth, which is so uncertain, but to put their hope in God, who richly provides us with everything for our enjoyment".

● **HOLD A FAMILY CONFERENCE TO DISCUSS YOUR CONTRIBUTION**

If you have children, involve them, no matter how young they are. It's an opportunity to teach them generosity and faith. Read these Bible promises and instructions and make a list of what you learn: Proverbs 3:9-10, Proverbs 11:24-25, Luke 6:38, 1 Corinthians 16:1-2, 2 Corinthians 9:6-12, Matthew 6:19-20.

● **ASK THESE QUESTIONS IN YOUR FAMILY CONFERENCE**

For your offering:

- * Is there anything the Lord is asking us to sell or convert to cash?
- * Is there anything the Lord is asking us to do to bring in income for our offering?

For your weekly or monthly commitment for 12 months:

- * Should we decrease our expenses in order to be more generous?
- * Are there expenditures that we should sacrifice or delay?
- * How can we increase our income in order to make a larger faith commitment?

● **DECIDE THE TOTAL YOU'LL GIVE (CASH OR COMMITMENT), HOLD HANDS, AND DEDICATE YOURSELVES TO GROWING IN FAITH DURING THE NEXT 12 MONTHS!**

Pray this over your FAITH IN ACTION commitment:

"Father, this is a big step for us. We're asking You to stretch our faith, strengthen our faith, and deepen our faith through this commitment to be generous. We realize that everything we have comes from You, so we make this commitment for several reasons. First, to express our gratitude for all You've provided for us in the past. Second, to show our desire for You to be first in our lives right now. Third, to demonstrate our faith in Your promises to provide for us in the future as we honor You. And finally, to show our support for our church family in making a difference for eternity. Thank You for this opportunity to grow in trusting You and thank You for our church family. We pray this new Campus and Pantry Center will be a great success! In Jesus' name, Amen!"

EQUAL SACRIFICE NOT EQUAL GIFTS

OUR GOAL: \$1.5 MILLION

HOW TO MAKE YOUR GIFT AND COMMITMENT

Included with this brochure is your personal commitment card and an offering envelope. After praying about your FAITH IN ACTION commitment, please follow these steps:

1. Either make your gift online at **HeritageChurch.com/HCCampus** or enclose your check in the envelope provided.
2. Using the My Giving Potential Guide (below), write down the amount you pledge to commit by faith for the next 12 months.
3. Whether online or a physical card, the goal is for everyone to fill out a commitment card. Bring your physical commitment card to one of our church services, or mail it in the pre-addressed envelope with your gift.

MY GIVING POTENTIAL GUIDE

Each of us can give far more than we think by giving it over a 12-month period. Here are some examples:

Weekly	=	Monthly	=	1 Year
\$10		\$43		\$520
\$15		\$65		\$780
\$25		\$108		\$1,300
\$50		\$217		\$2,600
\$100		\$433		\$5,200

Weekly	=	Monthly	=	1 Year
\$150		\$650		\$7,800
\$200		\$867		\$10,400
\$300		\$1,300		\$15,600
\$400		\$1,733		\$20,800
\$500		\$2,167		\$26,000

Over the next 12 months...



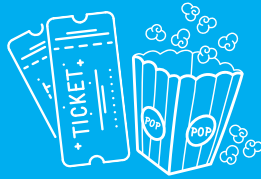
Average tax return per year

\$2,900



Take lunch to work 1 day a week

\$500



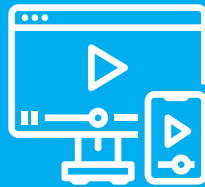
A trip to the movies twice a month

\$650



A 3-day family vacation

\$3,600



Streaming services

\$460



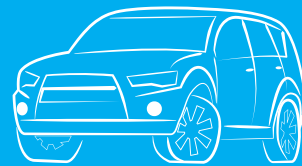
One 16oz latte per day

\$2,000



Dinner for two once a week

\$2,600



Financing a new car

\$8,700

5 WAYS TO GIVE

1. GIVE A ONE-TIME GIFT

Cash gifts can include savings, tax refunds, stock dividends, garage sales, extra part-time jobs, deferring a major purchase, etc. Ask God for creative ideas to raise cash.

2. MAKE A 12-MONTH GIVING PLEDGE

You can give far more when it's spread out over time. Refer to the My Giving Potential Guide on the previous page and you will be amazed at the total of your potential weekly or monthly giving over the year.

3. SET UP AUTOMATIC GIVING

The easiest way to schedule giving to your one-year pledge is to set up automatically, safely, and securely at **HeritageChurch.com/Giving**.

4. GIVE PROPERTY, STOCK, OR OTHER ITEMS OF VALUE

Give stock, real estate, cars, gold, jewelry, boats, bonds, etc. Our Administrative Director, Wesley Woods, can be reached at WWoods@HeritageChurch.com or (586) 997-9490.

5. CONSIDER ADDING HERITAGE CHURCH AS A BENEFICIARY IN YOUR WILL AND TRUST

Our Administrative Director, Wesley Woods, can be reached at WWoods@HeritageChurch.com or (586) 997-9490.

"And do not forget to do good and to share with others, for with such sacrifices God is pleased."
Hebrews 13:16 NIV

FREQUENTLY ASKED QUESTIONS ABOUT THE FAITH IN ACTION COMMITMENT

Q: IS THIS A PLEDGE, AN OFFERING, OR BOTH?

A: It's both. With our theme — "Not equal gifts, equal sacrifice" — we each decide what will be our sacrifice to God in gratitude to Him. In faith, you pledge to give that amount over the next 12 months, and begin that commitment with whatever beyond the tithe offering you are able to give each week.

Q: I'VE NEVER REALLY GIVEN CONSISTENTLY. WHERE SHOULD I START?

A: If you haven't developed the habit of tithing (10% goes to God), then you should start with that as your FAITH IN ACTION commitment. Go to HeritageChurch.com/Giving to start tithing today. For more info on giving, sign up for our 201 Class at HeritageChurch.com/201

Q: SHOULD MY "FAITH IN ACTION" COMMITMENT BE ABOVE AND BEYOND MY REGULAR TITHE?

A: Yes. The Bible explains that our regular giving to our local church is called our "tithe", and anything above and beyond that is called an "offering". This campaign is above and beyond our regular giving.

Q: WHAT IS THE BEST WAY TO MAKE MY GIVING COMMITMENT AND OFFERING?

A: Online. It's quite easy and fast. Just go to **HeritageChurch.com/HCCampus**. While online is the easiest, you can always give by making a cash gift, making a 12-month giving pledge, giving property, stock, or other items of value, or adding Heritage Church as a beneficiary in your will and trust if you so choose.

Q: HOW WILL HERITAGE USE THESE FUNDS?

A: 100% of the funds collected will go to the launch of this brand new Campus, as well as the construction of our new Pantry Center at our Sterling Heights location.

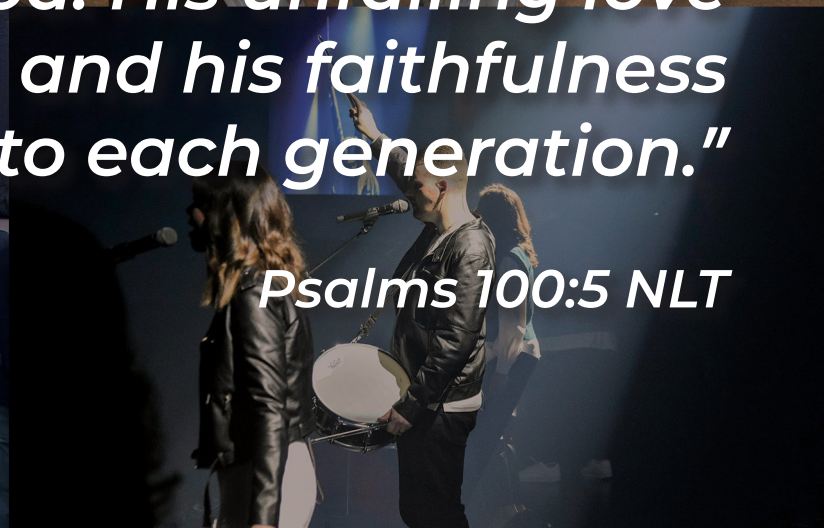
Q: IF I GIVE ONLINE, CAN I STILL FILL OUT AND GIVE A COMMITMENT CARD?

A: Please do! Our goal is for everyone to fill out a commitment card. If you give or pledge your gift online, please indicate that by checking the appropriate box on your physical card in any of our services.





"For the Lord is good. His unfailing love continues forever, and his faithfulness continues to each generation."



Psalms 100:5 NLT



Heritage Church

More information at
HeritageChurch.com/HCCampus